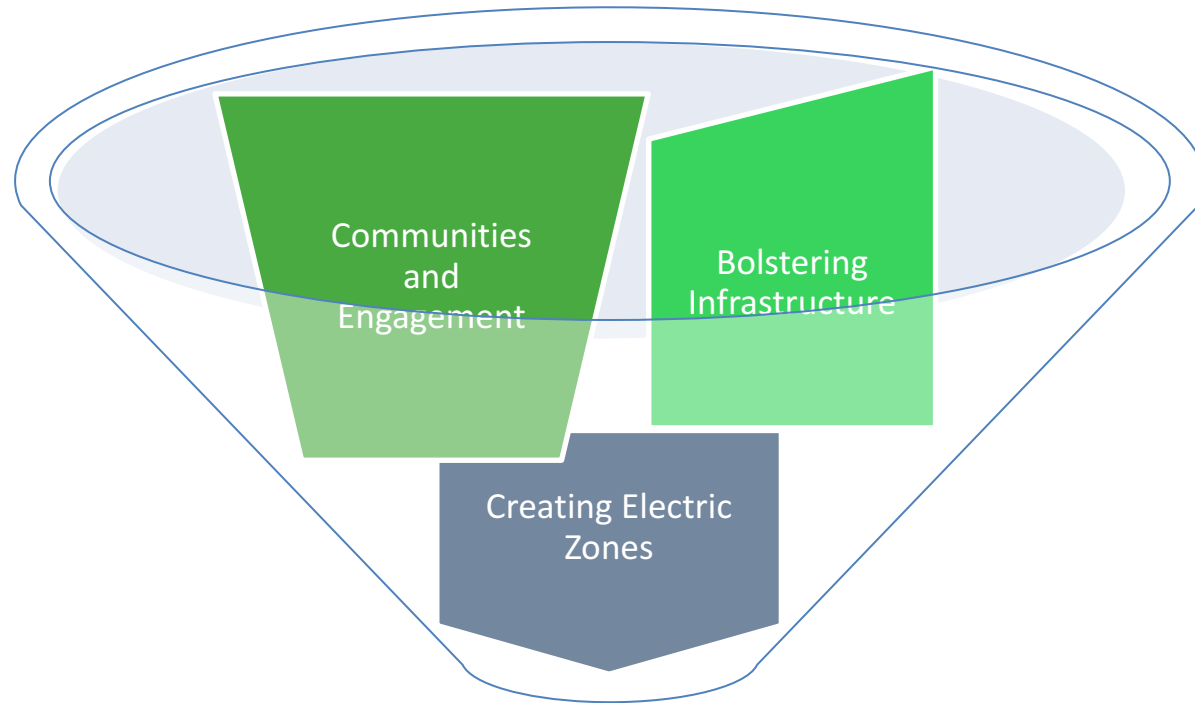


Go Ultra Low West

Christina Wilson
Sustainable Transport Project Manager

Our Approach



**Ultra Low Emission Vehicles
(ULEV) uptake**

Bolstering Infrastructure



Laying the foundations for growth

- Doubling the number of charging points in South Gloucestershire, both public facing and privately owned (business).
- Providing match funded grants to businesses for charging points.
 - Employer grants are available which will 50 / 50 match fund the charge points and associated infrastructure for amounts up to £25,000.
 - Additional support is also available to promote sustainable travel via Access West scheme. These grants are also match funded and offer amounts up to £10,000.

Making sustainable travel more attractive in the workplace

Our employer grants aim to help businesses achieve their sustainable transport goals!

- Electric charging points – Do your staff have access to charge points?
- Cycle Parking – Do you provide secure, covered and convenient cycle parking?
- Cycling Equipment – Do you offer staff access to cycling equipment such as cycle pumps?
- Workplace facilities – Are there locker, shower and changing rooms facilities at your workplace?

Communities and Engagement

Raising the profile of electric mobility

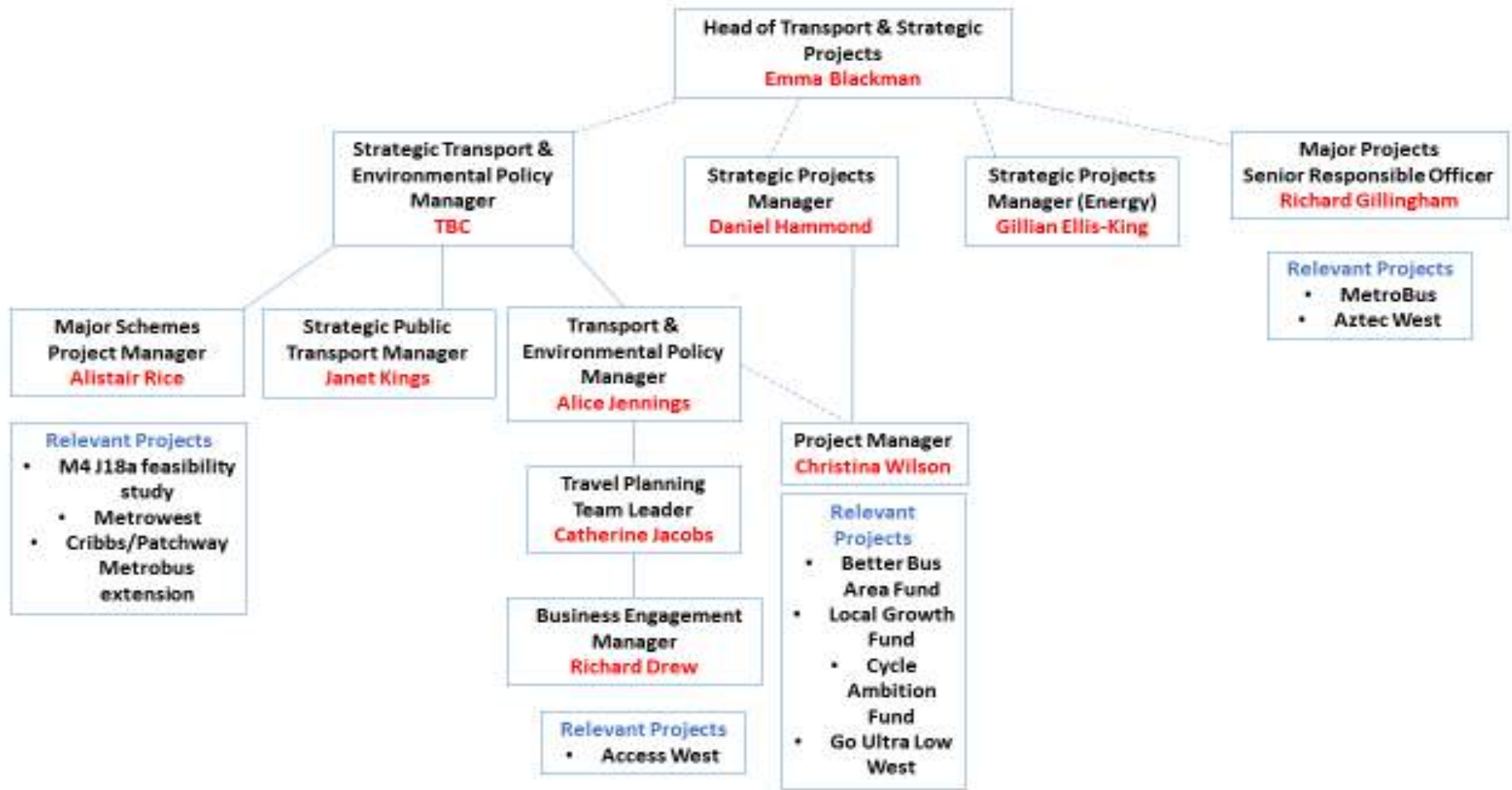
- Establishing electric car club bays, with dedicated charging points.
- Try-before-you-buy demonstrator vehicle scheme.



Creating Electric Zones

- Provision of a flagship 8 bay rapid charging hub for electric vehicles at the UWE site on Coldharbour Lane.
- Investigating policy measures that may promote the uptake of electric vehicles.

Team Structure



Summary

We want to:

- Improve awareness and enthusiasm about the benefits of ULEVs among local residents in South Gloucestershire.
- Increase the amount charging points across the region by working closely with local enterprises.
- Lead the way in promoting sustainable travel with a higher propensity of ULEV uptake than the national average.