

M4 Junction 18a Link Study

Public Consultation

August - October 2017

Study remit

- The emerging Joint Transport Study (JTS) has identified a need for a new junction between M4 Junction 18 and Junction 19 and link road to the ring road.
- Central Government has provided £500,000 to South Gloucestershire Council to fund a feasibility study.
- The study is being led by South Gloucestershire Council in partnership with Highways England.

Need for the scheme

The M4, M32, A4174 ring road and other routes in the north-east fringe of Bristol are well known for congestion, delays and incidents.

Supporting policy documents include:

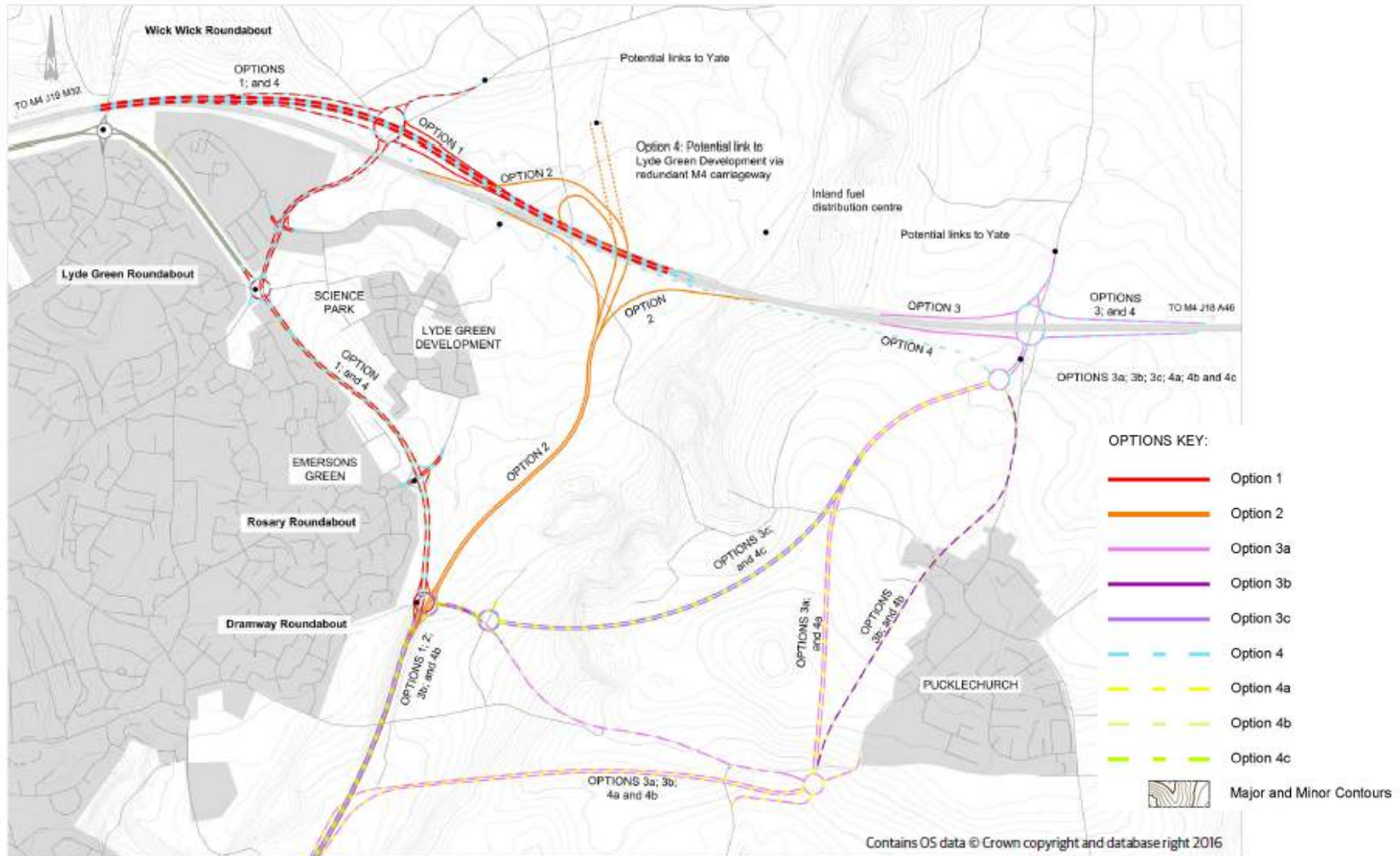
- South Gloucestershire Core Strategy (December 2013)
- Joint Transport Study for the West of England (emerging)



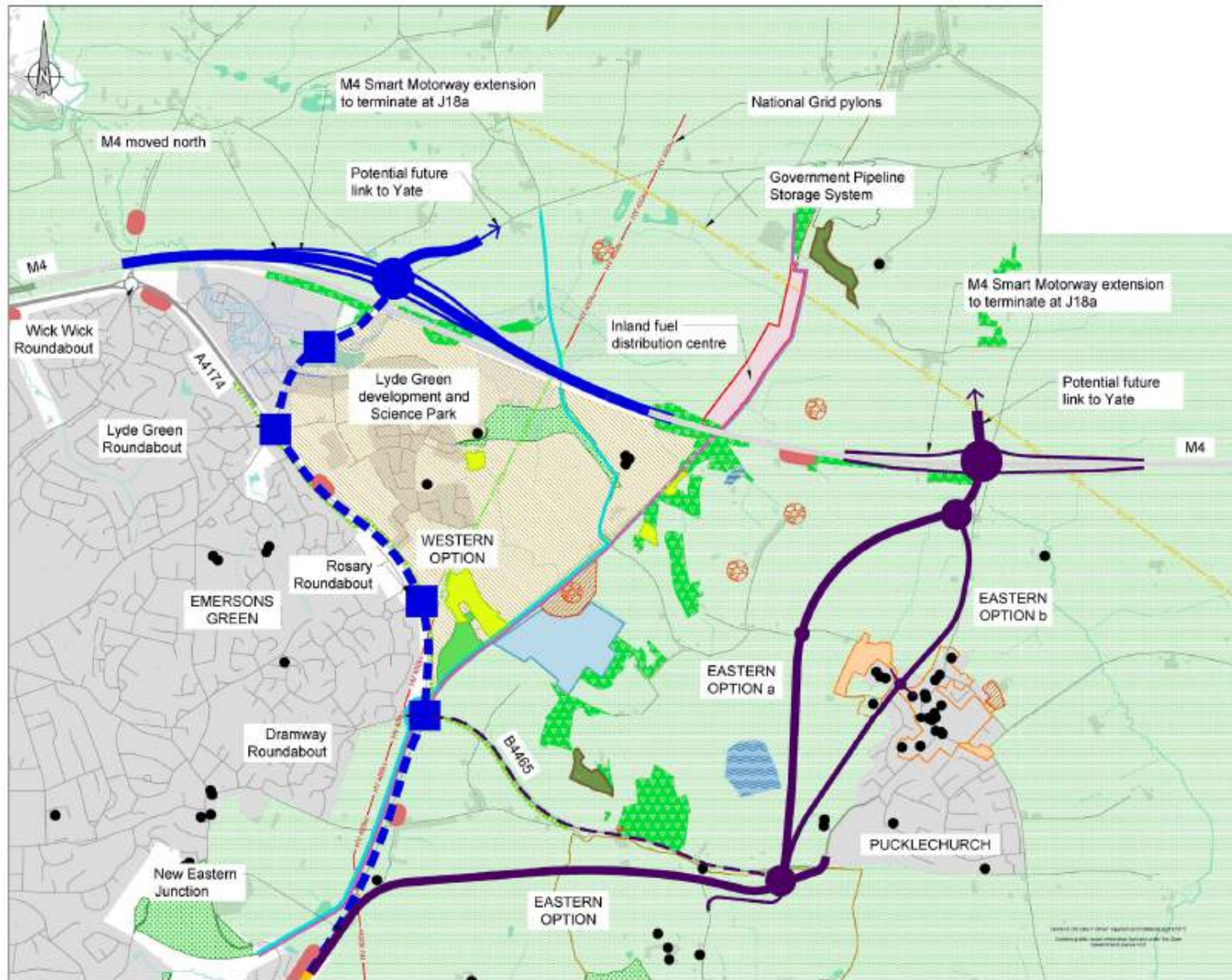
Scheme objectives

- Relieve congestion to M4 J19 and M32 J1, and on the A4174 corridor
- Improve safety by reducing congestion related collisions on M4 J19 and M32 J1, and on the A4174 corridor
- Unlock the economic potential in the north east Bristol Fringe, particularly within Science, Technology and Innovation sectors
- Improve transport network resilience and journey time reliability
- Minimise the impact of traffic/infrastructure to the natural environment and, where possible deliver opportunities for environmental enhancement
- Protect and enhance access for non-car modes

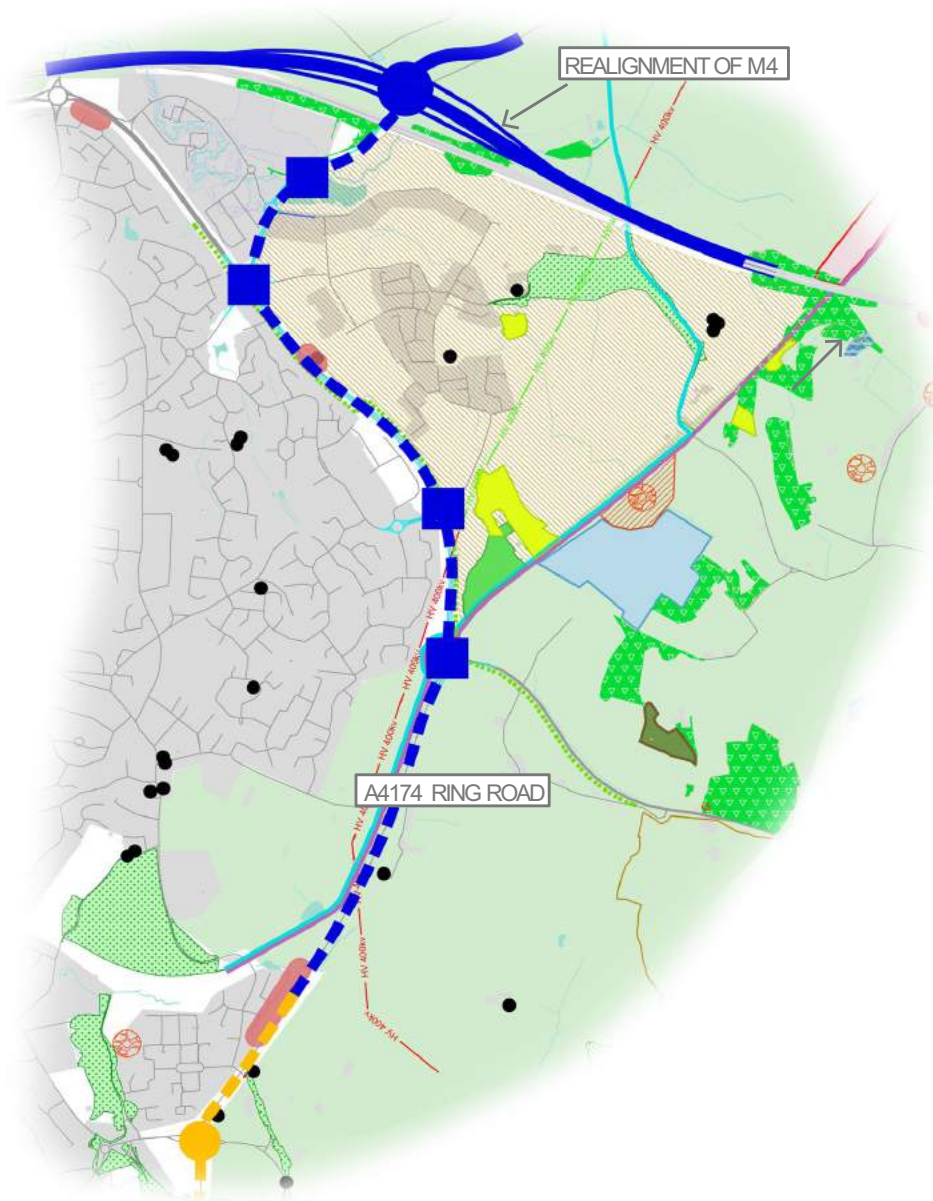
Area of search and route options



Proposed M4 J18a ring road improvements

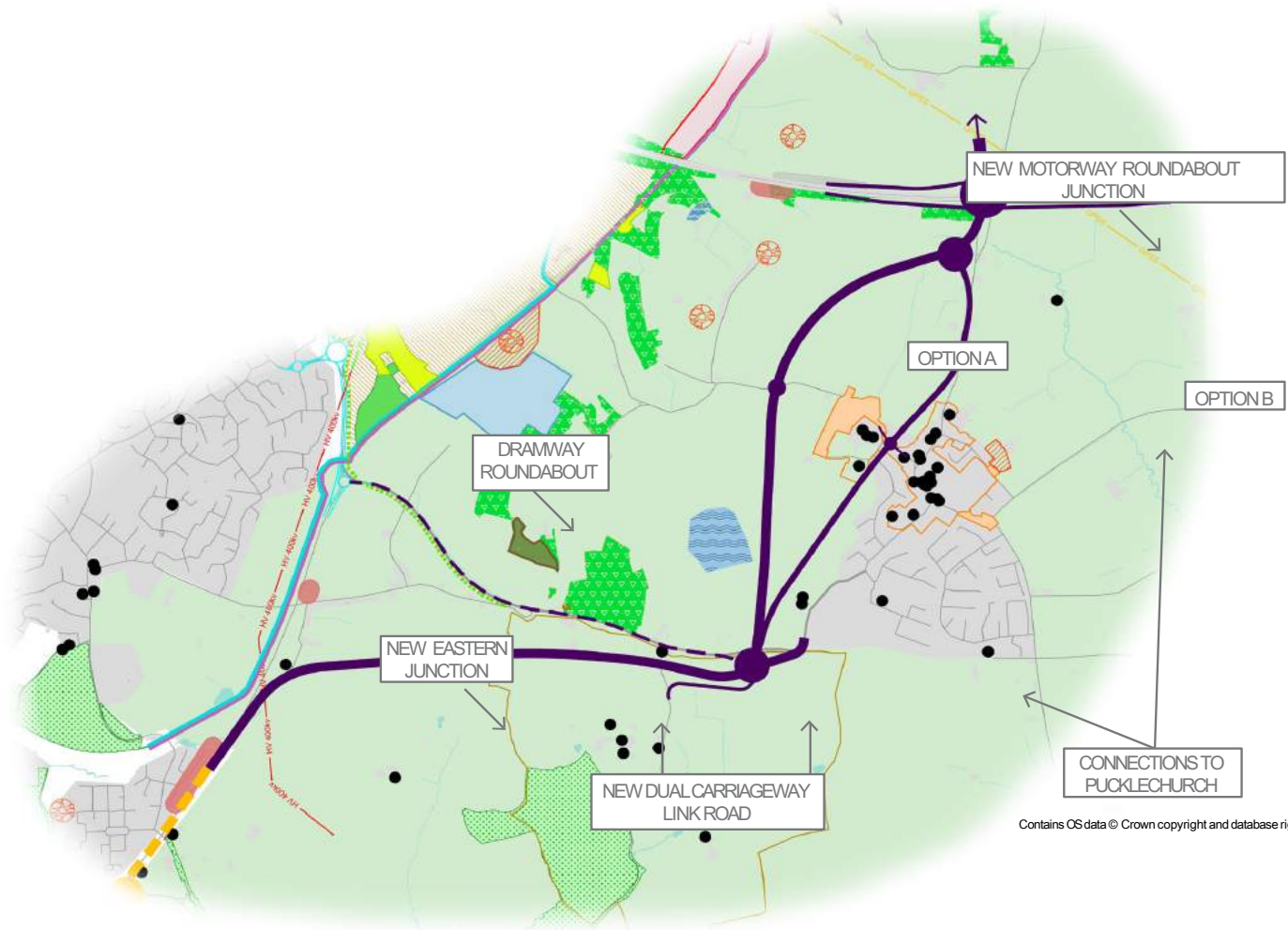


Western route option



Contains OS data © Crown copyright and database right 2016

Eastern route option



Cost of the scheme

The initial cost estimates for the scheme options at current prices (2017) are:

- Western route – £446 million
- Eastern Route (Option A) – £348 million
- Eastern Route (Option B) – £328 million

Both scheme options offer ‘high’ Value for Money (with a Benefit Cost Ratio of more than 2 to 1) when scored against the Department for Transport’s criteria.

Funding would need to be secured from national and local sources.

Next steps

The feasibility study will assess how the Western and Eastern options meet the scheme objectives and the Government's criteria for transport schemes.

The outcome from the consultation and feasibility study will be available by the end of March 2018.

South Gloucestershire Councillors will consider the outcome of the feasibility study in March 2018.