



North Bristol SusCom meeting

19th November 2015

Hewlett Packard Enterprise

Get ahead. Travel smarter.



Agenda

10:00 Welcome, Introduction and apologies - Chair

10:10 GWR: Travel Plans and Investments – Mark Youngman, GWR

10:40 Good Transport Plan – Nina Gillespie, Sustrans

10:55 Consultation Update on the JSP and JTS – Ann O’Driscoll, SusCom

11:15 Break – Networking

11:30 Join my Journey – ecosurety

12:00 North Bristol SusCom Update – AO’D

12:15 Updates All

12:30 Meeting Close

Joint Spatial Plan and Joint Transport Study

- The West of England's four local authorities have launched a public consultation on a new Joint Spatial Plan and Joint Transport Study.
- Consultation runs from 9 November 2015 to 29 January 2016.
- Joint Spatial Plan will determine where new homes and workplaces will be built.
- Joint Transport Study will inform high level strategy and the delivery of major transport schemes.
- Both looking to 2036. Both influence each other.



www.jointplanningwofe.org.uk

Joint Spatial Plan

- Estimates that 85,000* new homes need to be built by 2036. 56,000 are already planned for – need to find space for 29,000 more.
- Strategic rather than specific – will identify broad locations for growth.
- 5 spatial scenarios
 - Protection of the green belt
 - Concentration at Bristol Urban area
 - Transport Focused Development
 - Even spread across Bristol and other towns
 - Focus on a new settlement or a limited number of expanded settlements

* Many in the business community think this is a significant underestimate with Barton Willmore's researchers suggesting the true figure should be around 150,000 new homes.

West of England Joint Spatial Plan

To respond to the housing requirement for the wider Bristol Housing Market Area

Issues and options for consultation

November 2015

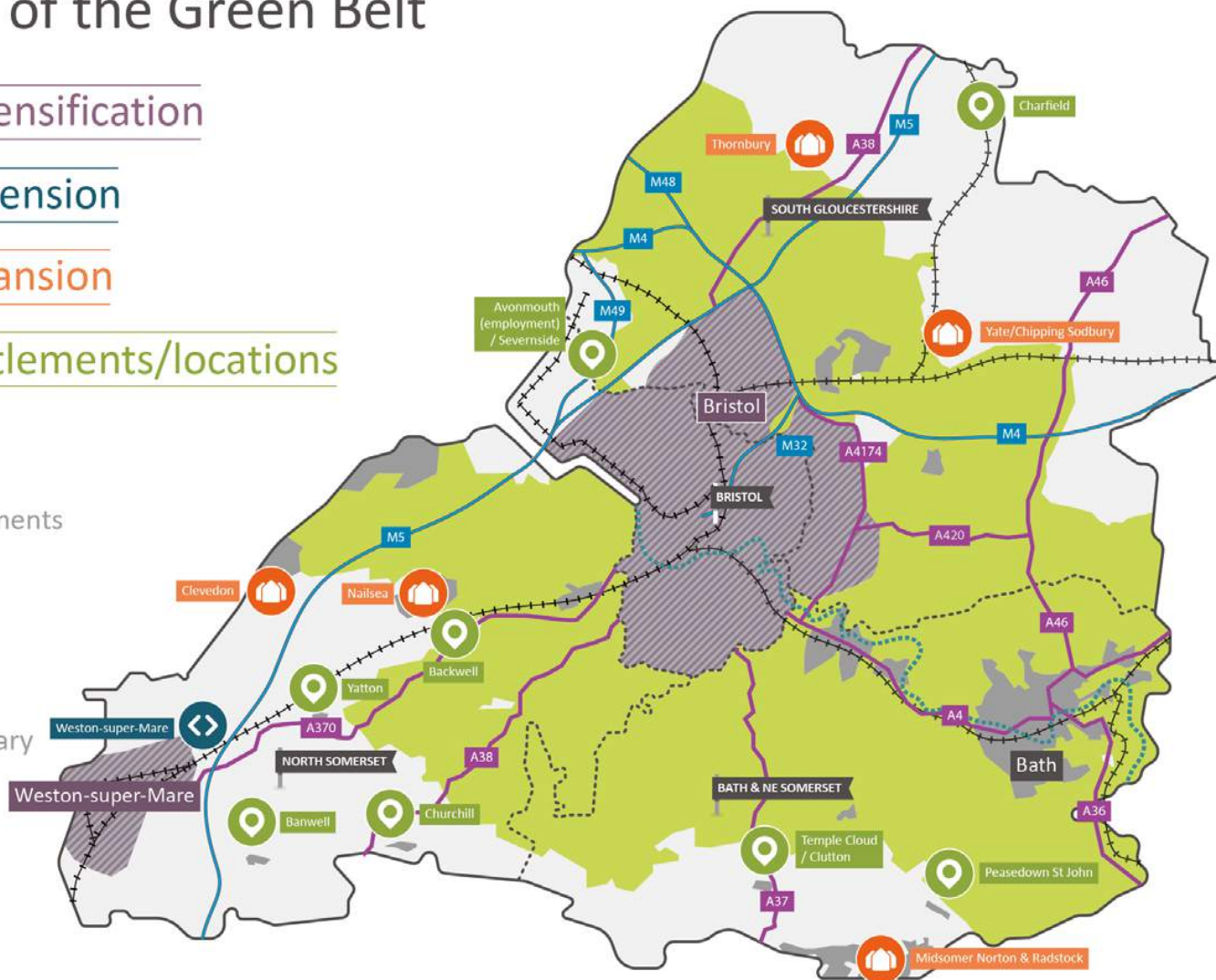


Figure 10: Illustrative diagram – spatial scenario 1– protection of Green Belt

Protection of the Green Belt

-  Urban intensification
-  Urban extension
-  Town expansion
-  Other settlements/locations

-  Green Belt
-  Existing settlements
-  Motorway
-  A Road
-  Railway line
-  Council boundary
-  River



Note: Locations are illustrative only and must not be taken to imply any specific development site or a preference for identified options

Figure 11: Illustrative diagram – spatial scenario 2 – major concentration

Concentration at Bristol urban area

Urban intensification

Urban extension

Green Belt

Existing settlements

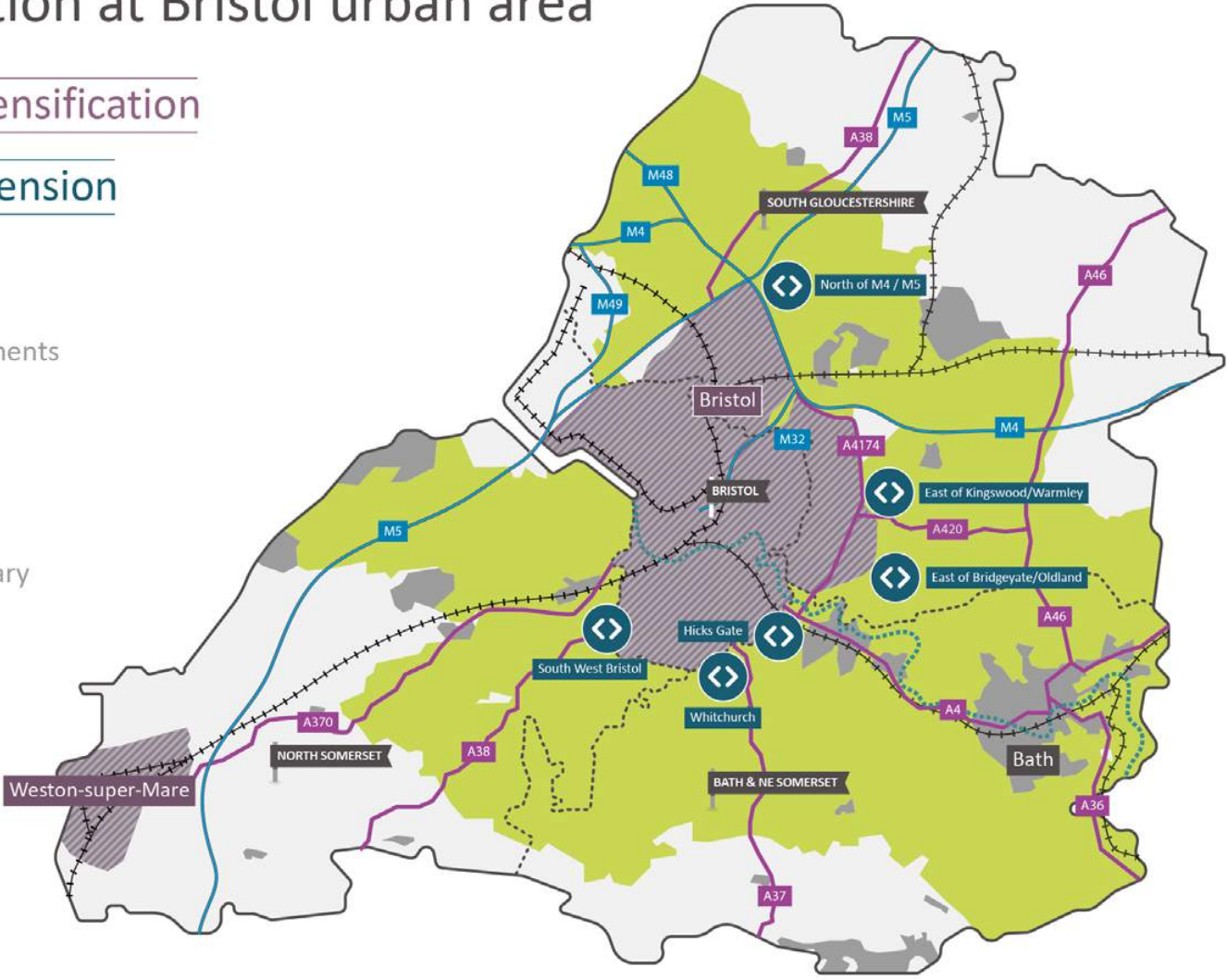
Motorway

A Road

Railway line

Council boundary

River





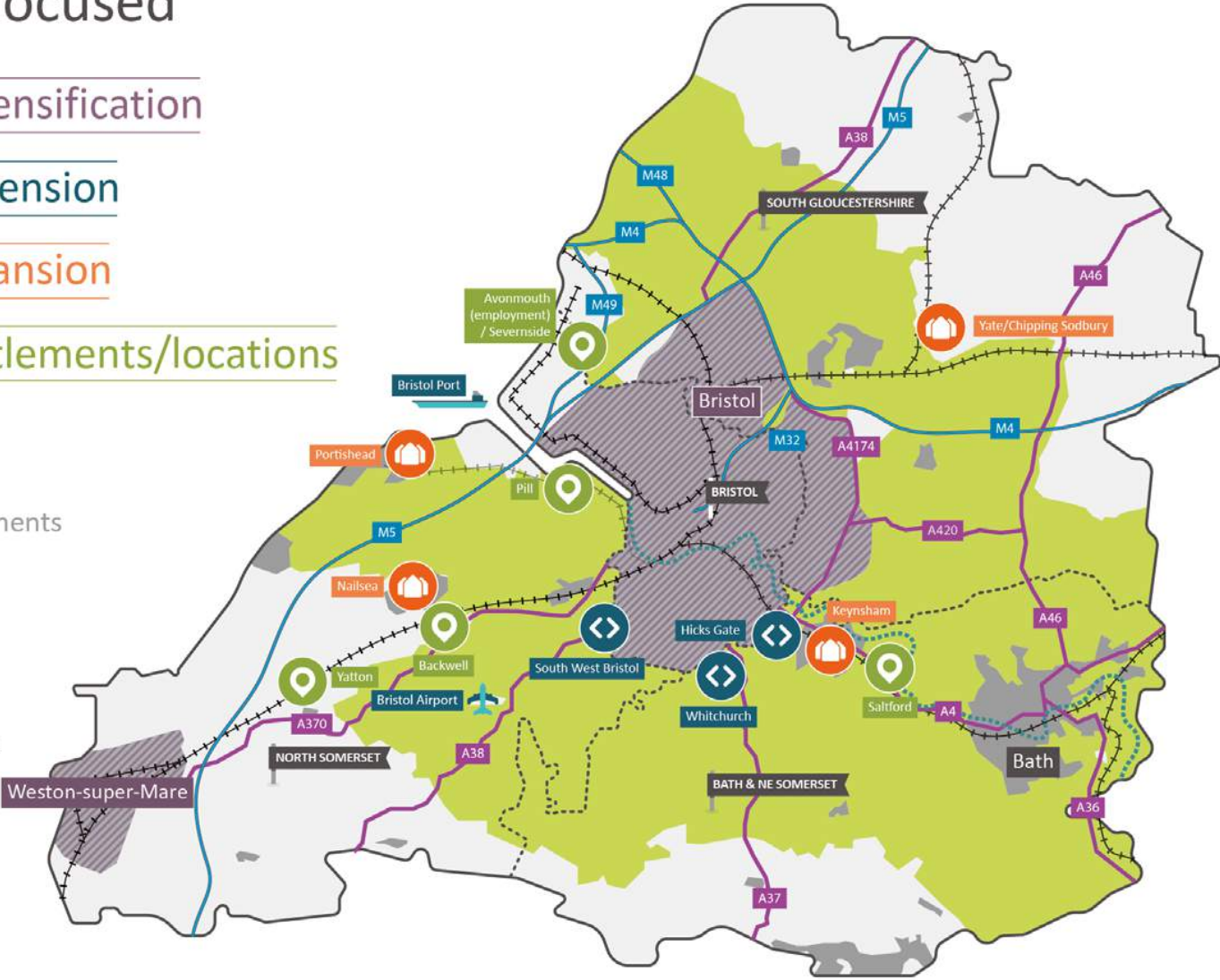
Note: Locations are illustrative only and must not be taken to imply any specific development site or a preference for identified options

Figure 12: Illustrative diagram – spatial scenario 3 – transport focussed

Transport focused

-  Urban intensification
-  Urban extension
-  Town expansion
-  Other settlements/locations

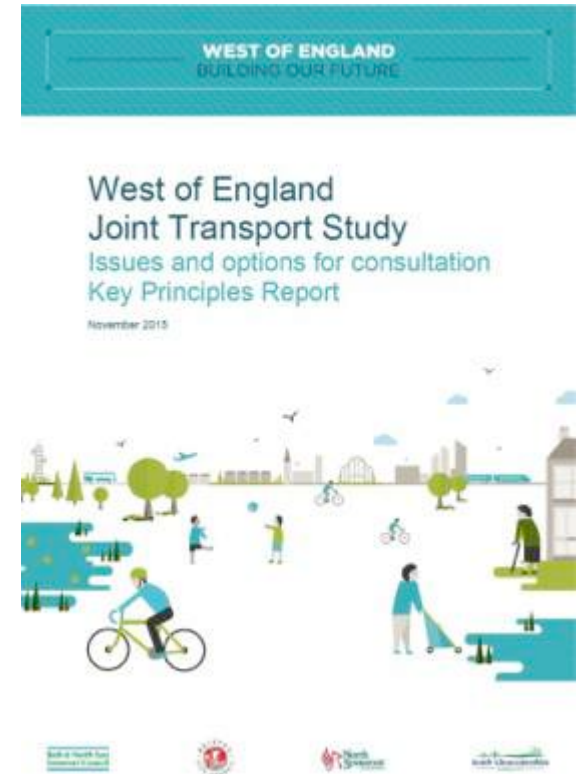
-  Green Belt
-  Existing settlements
-  Motorway
-  A Road
-  Railway line
-  Portishead line
-  Council boundary
-  River



Note: Locations are illustrative only and must not be taken to imply any specific development site or a preference for identified options

Joint Transport Study

- To provide a clear direction for the long-term development of the transport system in the West of England to 2036 and beyond.
- Will inform, and be informed by the Joint Spatial Plan – will help identify a preferred spatial strategy.
- Study looks at current and future transport issues – needs to address current infrastructure deficit as well future growth
- Clear priorities for investment – proactive investment rather than being bid/funding driven
- JSP Transport Focused Scenario – argues that quality of travel choices and scale of congestion in road network are two key factors that should be taken into account when assessing options for growth.



Joint Transport Study

Three key areas:

1. An assessment of current issues – what are the challenges we experience travelling around the area?
2. Formulation of objectives – where are we trying to get to? How do we prioritise?
3. Developing possible transport solutions – How can we get there? Transport concepts for discussion and consultation.



Joint Transport Study

Business Engagement

- SusCom, Business West and Green Capital Partnership working with consultation team on how best to engage business.
- Running 4 key events for business – Weston and Bath in December 2015 and Bristol and South Glos in January 2015.
- Provisional date for South Glos is **20 January 2016** at Hewlett Packard Enterprise. 8am – 11am.
- Materials and resources to help you promote the consultation to your employees.

Agenda

10:00 Welcome, Introduction and apologies - Chair

10:10 GWR: Travel Plans and Investments – Mark Youngman, GWR

10:45 Good Transport Plan – Nina Gillespie, Sustrans

10:55 Consultation Update on the JSP and JTS – Ann O’Driscoll, SusCom

11:15 Break – Networking

11:30 Join my Journey – ecosurety

12:00 North Bristol SusCom Update – AO’D

12:15 Updates All

12:30 Meeting Close

North Bristol SusCom Update

- **Travel Awards**
- **Membership**
- **Gipsy Patch Lane Bridge**
- **SES Case Study**

North Bristol SusCom Update

Travel Awards

Thursday 26th November, 5pm onwards – to include buffet and drinks with meal at the Grand Pier, Weston-super-Mare

Shortlisted entries:

Most Improved Workplace

Knowle West Media Centre
Mott Macdonald

North Bristol NHS Trust

University of the West of England

WSP Parsons Brinckerhoff

Best Newcomer

Averys Wine Merchants

Ecosurety

Harmsen Tilney Shane

Minuteman Press

Springfield Papers

Best Motivational Campaign

Aviva

Bristol City Council

Sift

Wessex Garages

Individual Most Committed

Ben Luger – Ecosurety

Emma Gillespie – Cavendish Nuclear

Stewart Cundy – University Hospitals Bristol

Sue Mackinnon – Knowle West Media Centre

Most Innovative Sustainable Travel Measure

First West of England

Hewlett Packard

SevernNet

University Hospitals Bristol

University of Bristol Student Union

North Bristol SusCom Update

Membership

- Rolls Royce has agreed to join SusCom. AOD meeting Ian Carr on 7 December.
- MOD Abbey Wood North hoping to join in spring for min. 18 months.
- Meeting with Filton 20 employers – some may start attending this group.
- NVIDIA has renewed membership.

North Bristol SusCom Members



North Bristol SusCom Update

Gipsy Patch Lane Bridge – Identified early on as a major pinch point for SusCom members. As part of the proposals for MetroBus Extension the Council is looking to replace the bridge. Their preferred option is a significant improvement on the existing - single carriage way in each direction, 3.5m shared use path on north side, 5m shared use path on south side, plus bus lane in both directions.

SES Case Study Leaflet – We have produced a leaflet, with UWE to outline the next stage of the Case Study activity. We will be in touch to arrange appointments/interviews as the second stage of this work.



South Glos Updates

- **Low Emission Bids**
 - Go Ultra Low City Bid – decision expected by end of November
 - Low Emission Bus Scheme – bids submitted 30th October. One bid, submitted in partnership with First, is for £30m investment in 110 gas-powered buses operating in and around North/ East Bristol including MetroBus and local services in the North Fringe. Second bid is from Wessex and GENeco for 20 gas powered buses, some which would operate on Bristol-UWE services. Decision expected January 2016.
- **Public Transport – December changes**
 - Next Date for bus service changes is in December.
 - Affected services are 1, 2, 12, 13, X14 and 19. 1&2 change on 6th December, rest on 12th December.
- **Key Consultations**
- **On-site works**

Key Consultation dates:

Consultation Topic	Dates
Joint Spatial Plan & Joint Transport Strategy	9 Nov 15 – 29 Jan 16
MetroBus Extension – Parkway to Cribbs	27 Nov 15 – 15 Jan 16
MetroWest Phase 2 – Henbury station location	30 Nov 15 – 25 Jan 16
South Glos Cycle Strategy	30 Nov 15 – 15 Jan 16

On-site works:

On Site Works	Dates
<p>Aztec West Roundabout</p> <ul style="list-style-type: none"> • Metrobus works on Great Stoke Way, A38 – bus slip and new bus shelters • Aztec West roundabout widening and installation of cycle and pedestrian crossing on each arm of roundabout. 	<p>Current - 2017</p>
<p>Station Road, Patchway</p> <ul style="list-style-type: none"> • Patchway Station – works associated with electrification including footbridge replacement • Station Road waiting restrictions – early 2016. • Station Road Stabilisations – due to land-slip • Build out on Staple Road at Rossell Avenue Steps – to follow stabilisation works • Watercourse clearance – to reduce flood risk • Patchway Station Car Park – extension of existing car park (planned once site compound for electrification is no longer needed) 	<p>Underway or programmed</p>

On-site works:

On Site Works	Dates
<p>A38 / A4174 / B4057 Filton Roundabout</p> <ul style="list-style-type: none"> • A38 approach – complete before Christmas, minor works in New Year. • Resurfacing, along with A4174 approach end of November. 	<p>November/end Dec 2015</p>
<p>A4174 Ring Road Major Maintenance Scheme</p> <ul style="list-style-type: none"> • Work continuing on the designs to enhance carriageway, footpath and cycle ways along the A4174. Should be completed shortly and key stakeholders will be updated. • Works will need to be undertaken on three structures – Bromley Heath Viaduct, Avonway Bridge and Filton underpass. Trying to co-ordinate works with MetroBus to minimise disruption. 	<p>2016/2017</p>
<p>Cycle lighting scheme</p> <ul style="list-style-type: none"> • Railway Path section from Mangotsfield Station to Emerson's Green and Filton Road (Frenchay to the UWE campus) • Lighting has recently been installed on Bromley Heath section of Ring Road path. 	<p>2016/17 – completed by December</p>

On-site works:

On Site Works	Dates
<p>MetroBus (North Fringe to Hengrove) On site at various locations including Aztec West, Bradley Stoke Way, Stoke Gifford Transport Link and A4174. Works on Church Lane bridge (demolition scheduled for December) will involve some temporary closures on the A4174.</p>	<p>Current - 2017</p>
<p>Rail – Temporary Period of Disruption (TPOD) 2 Line between Bath and Bristol closed. Rail Replacement Services (RRS) in operation.</p>	<p>2nd Apr – 11 Apr 2016</p>
<p>Rail – Temporary Period of Disruption (TPOD) 3 Line between Bath and Bristol closed. Bath Spa Station platform widening, to avoid listed canopy, and extension over viaduct. Rail Replacement Services (RRS) in operation.</p>	<p>Easter 2017 14 days</p>

Updates – All

Next Meetings (meetings start at 10:00 and end at 12:30)

21 st Jan 2016	Aviva Centre (formerly Friends Life), Stoke Gifford
17 th March 2016	The Mall, Cribbs Causeway
19 th May 2016	UWE
21 st July 2016	HP, Stoke Gifford
15 th Sept 2016	Bristol & Bath Science Park
17 th Nov 2016	Southmead Hospital