

West of England Joint Transport Study

Presentation to North Bristol Suscom

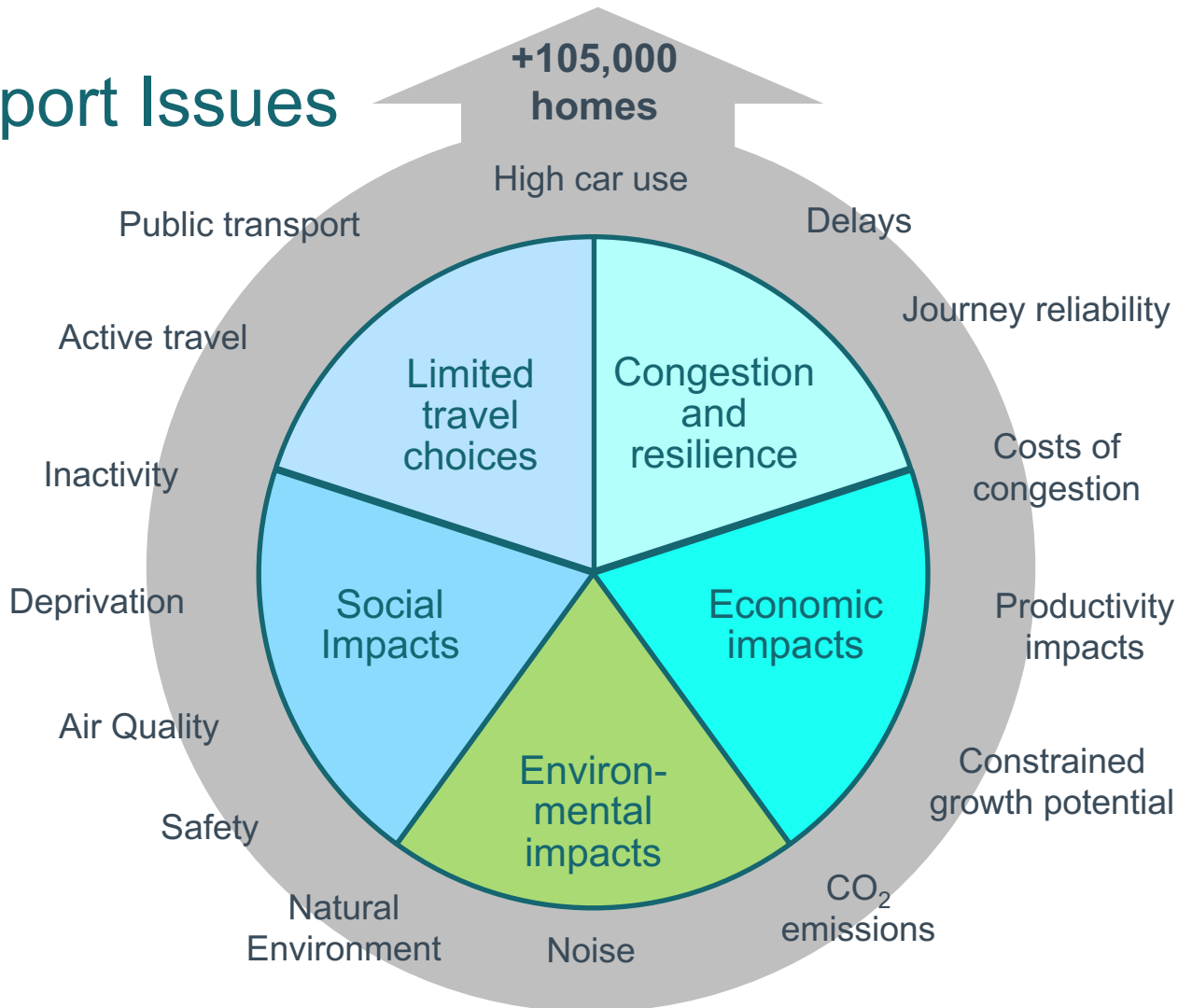
28th November 2017



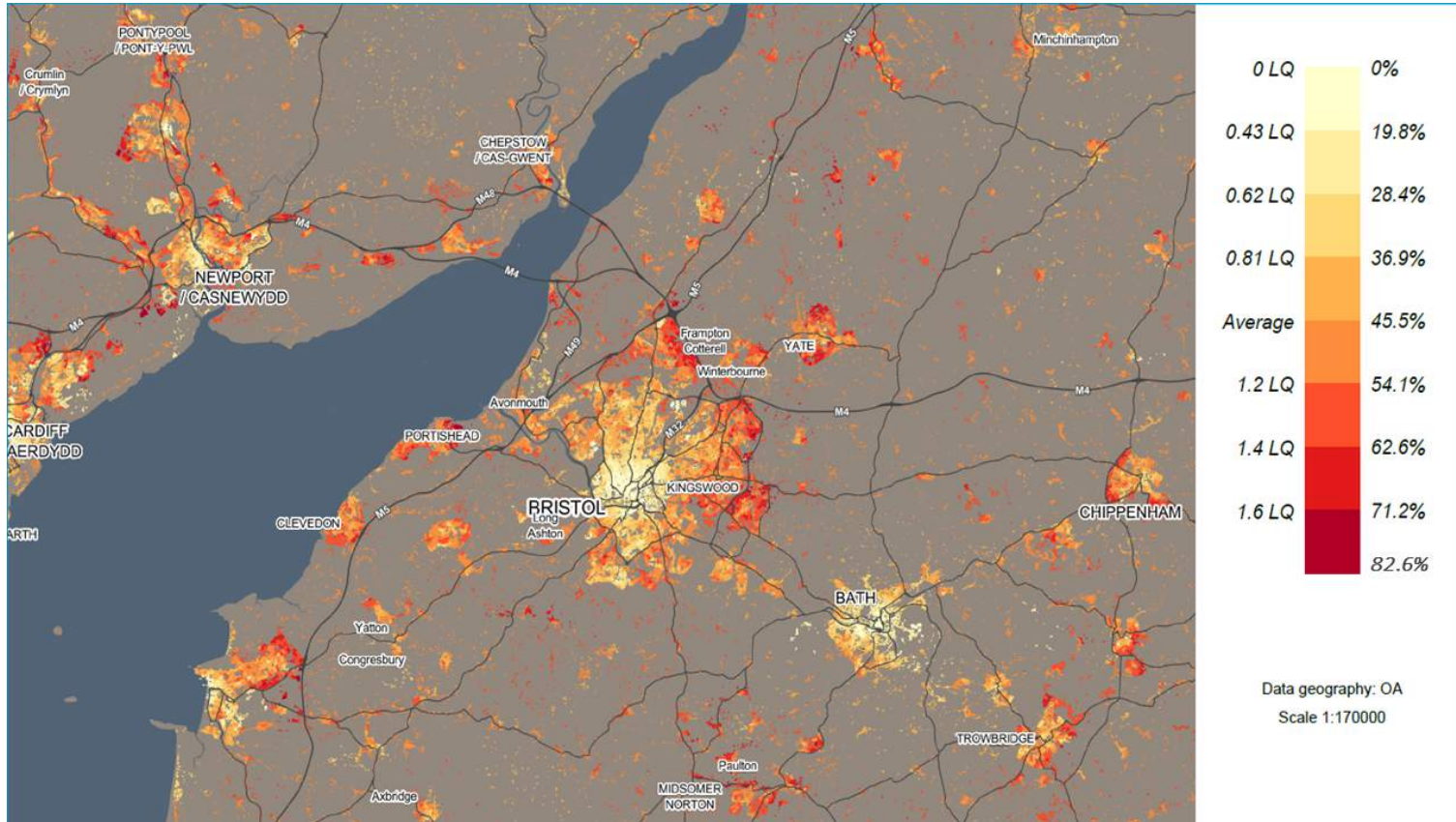
Joint Transport Study

- Commenced Spring 2015, completed Autumn 2017
- Looks to 2036 and beyond: addresses current and future challenges
- Informs and informed by Joint Spatial Plan
- Study is now complete: endorsed by Leaders at Joint Committee on 30th October
- Report on West of England website: https://www.jointplanningwofe.org.uk/gf2.ti/-/845730/31415525.1/PDF/-/Joint_Transport_Study.pdf

Transport Issues



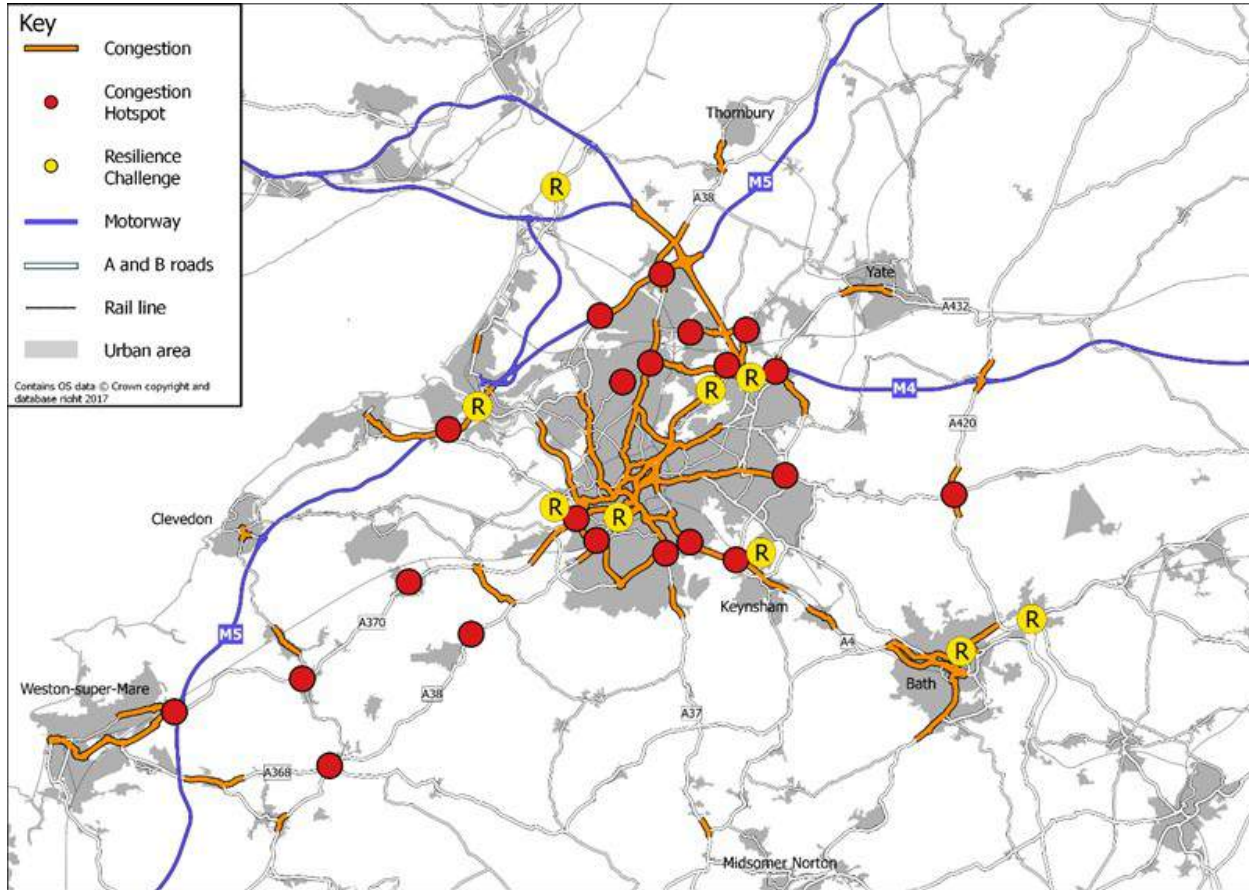
Limited travel choices for many....



% travel to work journeys by private transport

(Source: 2011 Census)

Congestion and resilience challenges....



Key routes

Junction hotspots

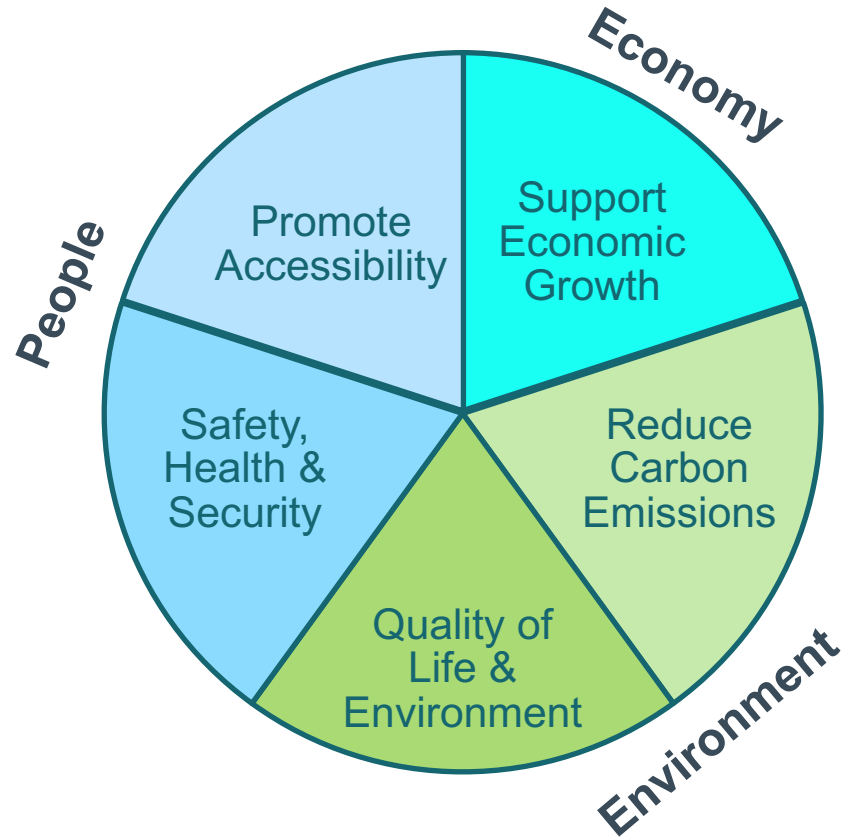
Network resilience

Local connections

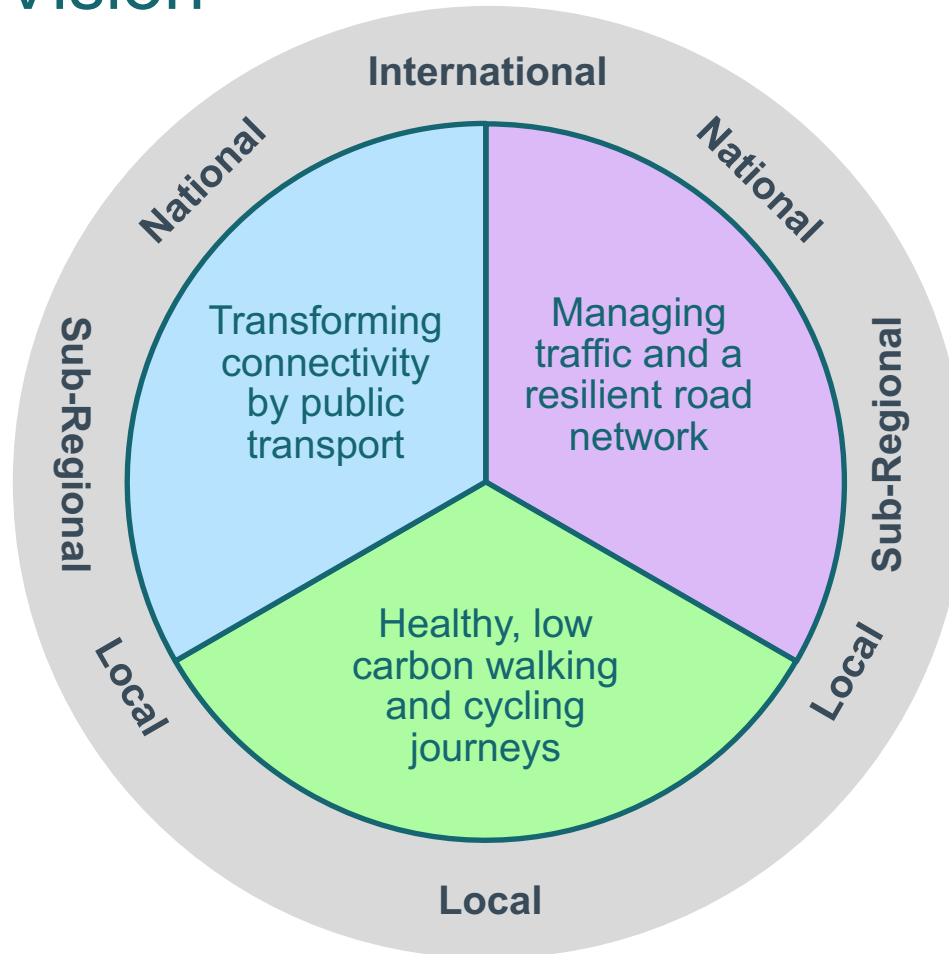
Sub-regional connections

Strategic connections

Transport Goals

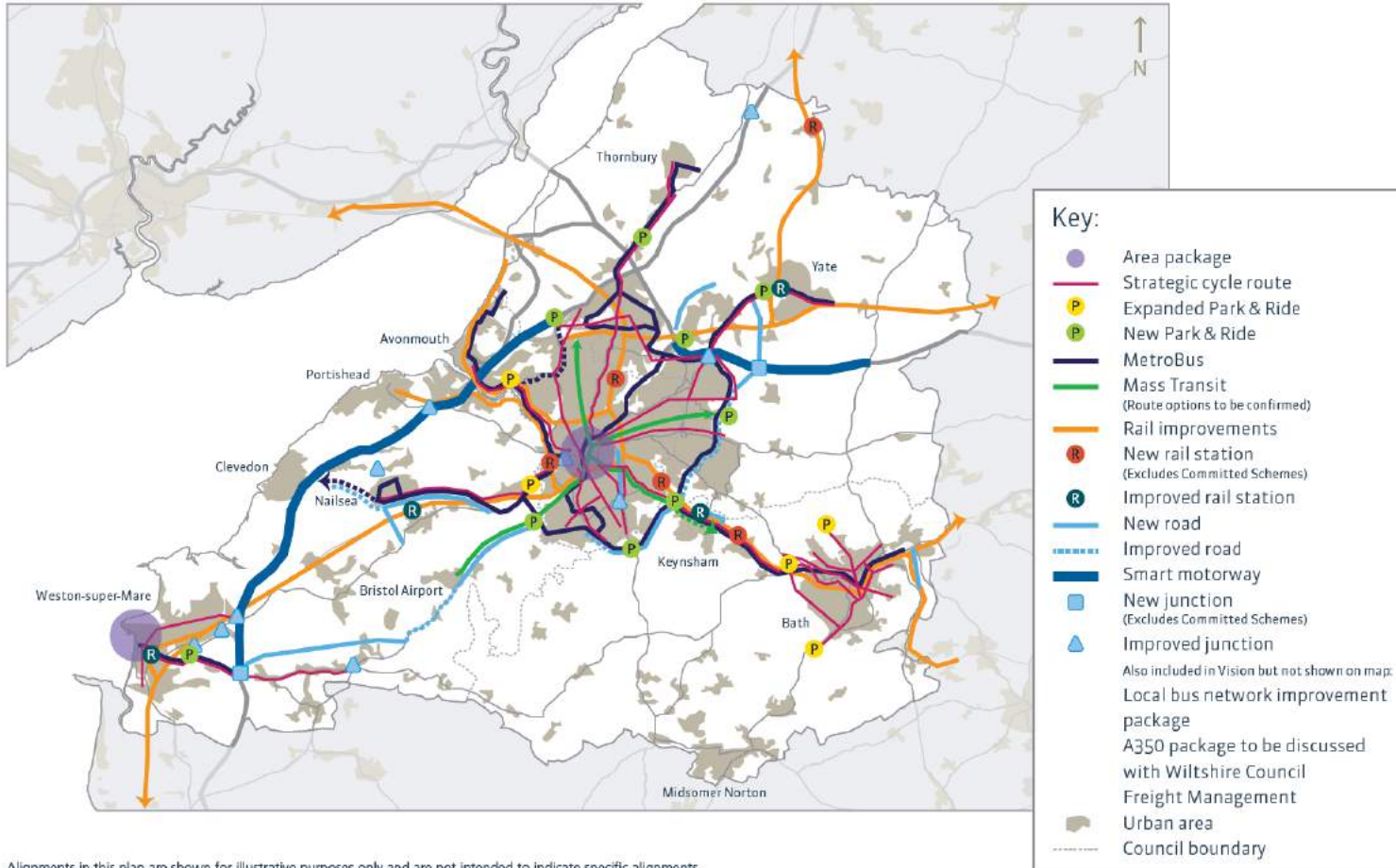


Transport Vision



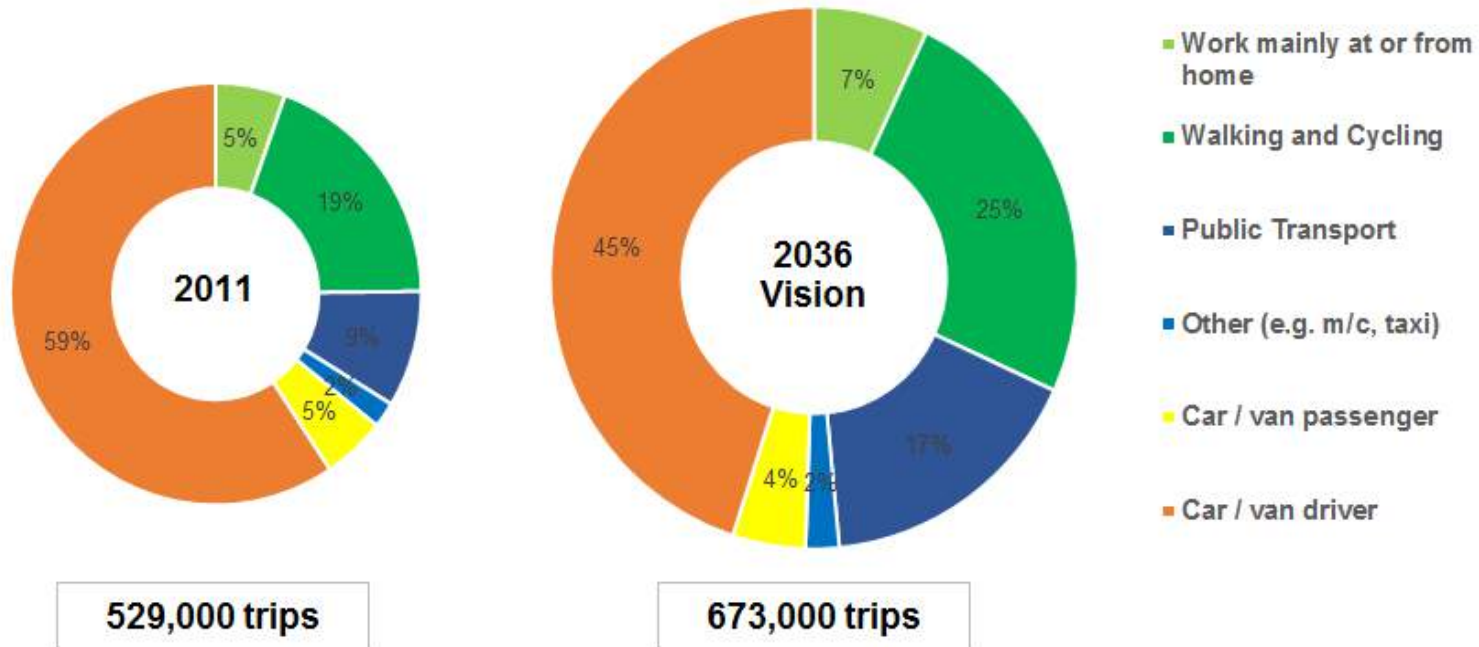
- Technology & Smarter Choices
- Active Travel
- Buses
- MetroBus
- Light Rail
- Interchange and Park & Ride
- Rail
- Road Network
- Port and Airport
- Freight
- Financial Measures

Transport Vision



Alignments in this plan are shown for illustrative purposes only and are not intended to indicate specific alignments

Outcomes: Forecast Mode Shift



Costs

	Outturn cost
Behaviour Change	£0.65 billion
Strategic Cycle Routes	£0.4 billion
Bus Network	£0.35 billion
MetroBus	£0.63 billion
Mass Transit	£2.6 billion +
Park & Ride	£0.2 billion
Rail	£1.0 billion
Road Network	£3.1 billion
Total	£8.9 billion +

What next?

- JSP Draft Plan: consultation now live - <https://www.jointplanningwofe.org.uk/consult.ti>
- More detailed studies to inform JSP infrastructure requirements
- Studies to assess options for mass transit: longer-term ambition
- New Joint Local Transport Plan: consultation Spring 2018
- Prioritisation and programming of schemes within Devolution Deal.

West of England Joint Transport Study

Thank you

Jonathan.foster-clark@atkinsglobal.com

